



Kennedy Nova ★★★★★

A four-star, seafront hotel within walking distance to IELS Malta.

Address

Hotel Kennedy Nova
116, The Strand
Gzira, GZR 1027,
Malta

Type of accommodation

4-star hotel.

Age of students

18 years and over. Exceptions only for younger groups with Group Leaders and minors with parents.

Check-in and check-out

Check-in from 14.00, check-out before 11.30.

Meals

Bed and breakfast as standard. Half board and full board available.

Kitchen/cooking facilities

Kitchens are not available for use by students.

Rooms

There are 98 hotel rooms, 18 of them with a sea-view. All rooms are pleasantly furnished and have cable TV, direct deal phone, mini bar (stocked on request), safe (at extra charge), air-conditioning, hairdryer.

Most rooms are available as singles or twins, triple rooms on request.

Bathrooms

Private bathrooms with bath or shower, WC and basin.

Utilities

Electricity, heat and light are included. Electricity is 240V, 50Hz AC. UK-type 3-pin plugs are used.

Internet and phone

Free wireless internet connection is available at the reception and pool area. There are also 2 PCs at the reception available at an extra charge.

Laundry

Laundry and dry cleaning service available at extra charge.

Security and keys

One key will be issued per room.

Bed linen, towels and cleaning

Hotel rooms are cleaned daily. The bed linen is changed 4 times a week, towels are changed daily.

Deposit & Damage Charges

Except for groups, deposit is required only for safe: a refundable deposit of EUR 35 and rent of EUR 1 per day. Any damage must be paid for at cost.

Visitors

Visitors are allowed in public areas.

Noise and restrictions

Noise must be kept to a minimum after 23.00.

Availability

Available all year round.

-  Breakfast included
-  Other meals available
-  Lift
-  Televisions
-  Tea/coffee facilities
-  Telephones in rooms
-  Hairdryers
-  Air conditioning
-  Wireless internet
-  Accessible rooms
-  Sauna and Jacuzzi
-  Swimming pool

Distance to school

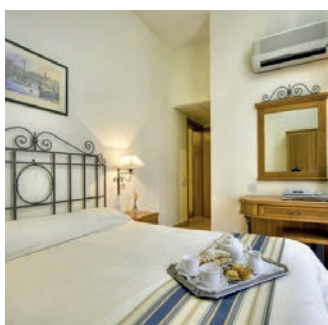
15 minutes on foot.

5-10 minutes away

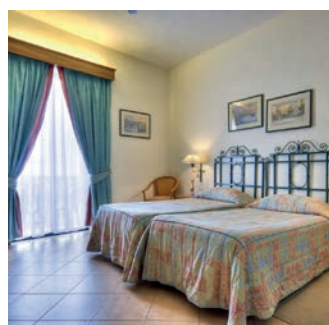
Promenade, city centre, shops, cafes, restaurants, bus stop, supermarket.

Local transport

Regular buses cover all main parts of the island. 2-hour ticket €2.00, 7-day ticket €21.00. For more details please visit www.publictransport.com.mt



A double bedroom



Sea view room



Reception

