



Mercury Residence

Comfortably furnished, self-catering student apartments in a quiet residential neighbourhood a short walk from IELS.

Address

The Mercury Residence,
Depiro Street,
Sliema SLM05, Malta

Type of accommodation

Self-catering student residence.

Age of students

18 years and over.

Check-in and check-out

Check-in from 14.00, check-out by 12.00. Please note that there is no reception at the Mercury Residence and keys must be collected from IELS staff. Students arriving at the weekend should book an airport transfer with IELS in order to receive the keys.

Meals

No meals are available.

Kitchen/cooking facilities

Each apartment has a fully equipped kitchenette with electric four-burner hob and oven, and a dining area.

Rooms

18 one and two-bedroom apartments on five floors. Single or shared, max two students per bedroom (extra beds can be arranged upon request). Lift to all floors. The apartments are comfortably furnished and have safety deposit boxes. Most apartments have a balcony or terrace.

Bathrooms

Each apartment has a private bathroom with a shower, WC and basin.

Utilities

Electricity, heat and light are included. Electricity is 240V, 50Hz AC. UK-type 3-pin plugs are used.

Internet and phone

In-room wireless broadband internet access available at no extra charge.

Laundry

There is a self-service laundry room with washing machines and tumble dryers (a nominal charge applies).

Security and keys

IELS staff will issue each student with a key on arrival.

Bed linen, towels and cleaning

Apartments are cleaned once a week, bed linens are also changed once a week.

Deposit & Damage Charges

No deposit. Any damage must be paid for at cost.

Visitors

Visitors are allowed in the public areas by arrangement only.

Noise and restrictions

Noise must be kept to a minimum after 23.00.

Availability

Available all year round.



Lift



Hot drink facilities



Kitchen in each apartment



Free wireless internet

Distance to school

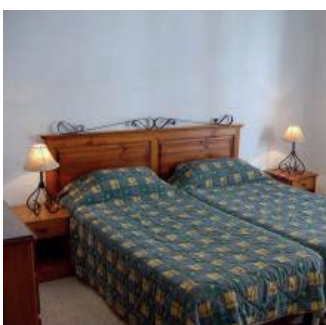
20 minutes on foot.
10 minutes by bus.

5-10 minutes away

Sliema promenade, shops, cafes, restaurants, bus stop, supermarket.

Local transport

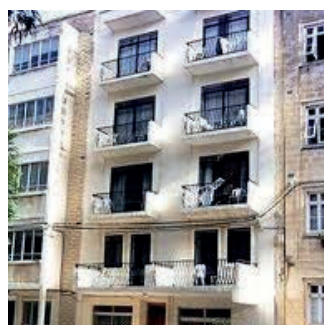
Bus stops are 5-10 minutes from the residence. 2-hour ticket €2.00, 7-day ticket €21.00. For more details please visit www.publictransport.com.mt



A twin standard bedroom



The Kitchen



Outside Mercury Residence

