



# Berkhamsted

## LEISURE DETAILS

INCLUDED FULL-DAY



### LONDON - WEST END

Take in the major sights on a walking guided tour of this exciting and historical capital. See many famous London landmarks, including Big Ben, Trafalgar Square, Piccadilly Circus and Buckingham Palace.

Packed meal included. No admissions are necessary in this tour. The total duration of this trip is approximately 8 hours, of which 2 hours is travel time. (Group visits to particular attractions are available upon request.)



### OXFORD COLLEGE & CITY TOUR

Visit the oldest university city in the English-speaking world. An ideal place to combine sightseeing and shopping with a visit to one of Oxford's world famous colleges.

Packed meal included. Admission to an Oxford college included. The total duration of this trip is approximately 9 hours, of which 3 hours is travel time.



### WINDSOR & ETON

See Windsor Castle, one of the residences of Queen Elizabeth, and visit the historical towns of Windsor and Eton, home of the famous school which Princes William and Harry attended.

3 & 4 week students only. Packed lunch included. Admission to Windsor Castle included. The total duration of this trip is approximately 8 hours, of which 3 hours is travel time.



### THORPE PARK

Visit one of Europe's most exciting theme parks. With over 30 rides and 10 referred to as "Extreme Thrill" rides, along with plenty of other things to see and do, Thorpe Park will easily keep everyone entertained all day.

4 week students only. Packed meal included. Admission to Thorpe Park included. The total duration of this trip is approximately 9 hours, of which 2 hours is travel time.

INCLUDED HALF-DAY



### LONDON & RIVER THAMES DISCO CRUISE

Visit the Science or the Natural History museum, then end the day with a Thames Boat Cruise and Disco, taking in the sights of famous landmarks.

Packed meal included. No admissions are necessary in this tour. The total duration of this trip is approximately 9 hours, of which 2 hours is travel time.



### ST ALBANS

Located to the north of London, St Albans is a town rich in history. The current cathedral was largely built in the 11th century and is the second longest church in the country.

Packed meal included. The total duration of this trip is approximately 5 hours, of which 2 hours is travel time.



### WHIPSNADE ZOO

Explore this huge, 600 acre, zoo which is home to around 3000 different species, many of which are endangered. Whipsnade zoo has been delighting animal lovers for over 70 years.

3 & 4 week students only. Packed meal included. Admission to Whipsnade Zoo included. The total duration of this trip is approximately 5 hours, of which 1 hour is travel time.



# Optional Excursions

FULL-DAY



from £55



from £42



from £45



from £52

## THORPE PARK

Visit one of Europe's most exciting theme parks. With over 30 rides and 10 referred to as "Extreme Thrill" rides, along with plenty of other things to see and do, Thorpe Park will easily keep everyone entertained all day.

Packed meal included. The total duration of this trip is approximately 9 hours, of which 2 hours is travel time.

## CAMBRIDGE

Cambridge University is one of the oldest and most respected universities in the world. The university's magnificent, historic buildings dominate the city. The traditional town centre offers shopping and amenities, plus plenty of parks and green spaces.

Packed meal and admission to King's College Chapel included. The total duration of this trip is 8 hours with 3 hours travel time.

## STRATFORD-UPON-AVON & WARWICK CASTLE

Visit Warwick Castle, with its exciting maze, jousting shows and spectacular birds of prey displays. After this you will enjoy a walking tour of Stratford-upon-Avon, the birthplace of William Shakespeare.

Packed meal included. The total duration of this trip is approximately 9 hours, of which 3.5 hours is travel time.

## LONDON EYE & MADAME TUSSAUDS

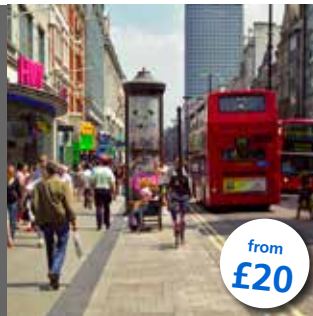
See the city from the tallest point in central London and then stand next to your favourite celebrities at the famous wax works museum.

Packed meal included. The total duration of this trip is approximately 9 hours, of which 2.5 hours is travel time. Long waiting times may be experienced.

HALF-DAY



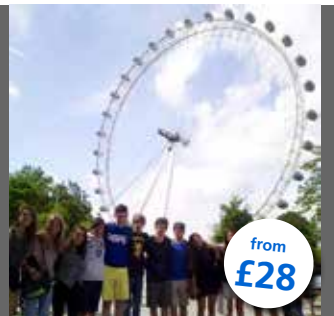
from £60



from £20



from £39



from £28

## HARRY POTTER - WARNER BROS STUDIO TOUR

Harry Potter Warner Bros Studio Tour. Go behind the scenes of the Harry Potter films and see how the films were made. Join in the magic of these iconic films and view the costumes, props and special effects used to bring the Harry Potter stories to life.

Packed meal included. The total duration of the trip will be 5 hours of which 1 hour is travel time. Please note that this excursion must be booked by 31st May 2017.

## BRITISH MUSEUM AND OXFORD STREET

First you will visit the British Museum with one of the largest and most comprehensive collections in existence, from the Rosetta Stone to Leonardo Da Vinci's sketches. After the museum, you will walk to nearby Oxford Street for some world-famous shopping.

Packed dinner included. The total duration of the trip is approximately 8 hours, of which 2.5 hours is travel time.

## WINDSOR

Half-day excursion to see Windsor Castle, one of the residences of Queen Elizabeth, followed by a visit to the historical town of Windsor.

Packed meal included. Admission to Windsor Castle included. The total duration of this trip is approximately 5 hours, of which 2.5 hours is travel time.

## BICESTER VILLAGE SHOPPING

Take a trip to one of the most famous outlet shopping centres in the UK. Enjoy great discounts on luxury brands such as Gucci, Prada and Mulberry, among others.

Packed meal is included. The total duration of the trip is 5 hours, of which approximately 1.5 hours is travel time.

### Terms and Conditions

Each two-week period includes two full-day and four half-day excursions. Students can arrive at the beginning of week 1, 2, 3, 4, 5 or 6. 3 and 4 week students have alternative excursions to avoid repetition. Students will never do the same excursion twice, unless requested. Transport by public transport or chartered coach is included. Admissions are included where required.

Optional excursions are half-day, full-day or overnight at an additional cost, and must be booked and paid for by the student prior to their commencement. If bookings are made before the course, payment must be made prior to arrival in GB Pounds. Other optional excursions may be arranged if booked at least two weeks before arrival. Optional excursions are subject to availability and minimum or maximum numbers. We also reserve the right to cancel or alter excursions due to unforeseen circumstances. Refunds are only given if an excursion is cancelled by LAL.

To book any optional additions, or for further information, please contact [berkhamsted.school@lalschools.com](mailto:berkhamsted.school@lalschools.com)



# Berkhamsted

## CALENDAR • 2017

JULY

9	Sunday	School Opens	
10	Monday		
11	Tuesday	St Albans	
12	Wednesday	British Museum & Oxford Street   Harry Potter - Warner Bros Studio Tour (optional excursions)	
13	Thursday		
14	Friday	London West End   Oxford	
15	Saturday		
16	Sunday	London Eye & Madame Tussauds   Cambridge (optional excursions)	
17	Monday		
18	Tuesday	London Museum & River Thames Disco Dinner Cruise	
19	Wednesday	Bicester Village Shopping   Windsor Castle (optional excursions)	
20	Thursday		
21	Friday	Oxford   London West End	
22	Saturday		
23	Sunday	Stratford upon Avon & Warwick Castle   Thorpe Park (optional excursions)	
24	Monday		
25	Tuesday	St Albans   Whipsnade Zoo (3 & 4 week students)	
26	Wednesday	British Museum & Oxford Street (optional excursion)	
27	Thursday	Harry Potter - Warner Bros. Studio Tour (optional excursion)	
28	Friday	London West End   Oxford   Windsor & Eton (3 & 4 week students)	

WEEK 1

WEEK 2

WEEK 3

AUGUST

29	Saturday		
30	Sunday	London Eye & Madame Tussauds   Cambridge (optional excursions)	
31	Monday		
1	Tuesday	London Museum & Thames Cruise Disco	
2	Wednesday	Bicester Village Shopping   Windsor Castle (optional excursions)	
3	Thursday		
4	Friday	Oxford   London West End   Thorpe Park (4 week students)	
5	Saturday		
6	Sunday	Thorpe Park   Stratford upon Avon & Warwick Castle (optional excursions)	
7	Monday		
8	Tuesday	St Albans	
9	Wednesday	British Museum & Oxford Street (optional excursion)	
10	Thursday	Harry Potter Warner Bros Studio (optional excursions)	
11	Friday	Oxford   London West End	
12	Saturday		
13	Sunday	London Eye & Madame Tussauds   Cambridge (optional excursions)	
14	Monday		
15	Tuesday	London Museum & Thames Cruise Disco	
16	Wednesday	British Museum & Oxford Street (optional excursions)	
17	Thursday		
18	Friday	Oxford   London West End   Windsor & Eton (3 & 4 week students)	
19	Saturday		
20	Sunday	School closes	

WEEK 4

WEEK 5

WEEK 6