



Main image: Mount Kelly

LAL Summer Schools hosts five residential summer schools in the UK, each with its own unique style of accommodation.

### Berkhamsted School, Hertfordshire

At Berkhamsted School we offer traditional British boarding school accommodation. The rooms for younger students are dormitories consisting of 10 beds. For older students we have shared rooms with 2-4 beds. All bathroom facilities are shared.

### Mount Kelly, Tavistock

This atmospheric school has five main boarding houses in keeping with the traditional English boarding school style. Each house offers a mixture of twin, triple and multi-bedded dormitory rooms with shared bathrooms. Students access their house using a security code and each bedroom is fitted with a lockable cabinet for the safe keeping of valuables. Please bring a padlock.

### University of Sussex, Brighton

This campus has single rooms within small apartments with both en-suite bathrooms and shared facilities. Students are supplied with a key to their room.

### St Mary's University, London

A university campus offering well-serviced, single rooms with en suite bathrooms or single rooms with shared bathrooms. Towels are supplied in St Mary's residences along with keys to bedrooms and buildings. The university provides 24 hour security throughout the campus. There is no shared bedroom provision at the school.

### St Swithun's School, Winchester

This impressive boarding school has six good quality boarding houses with spacious communal areas. Five houses offer single rooms with shared bathrooms, while a sixth house is made up of dormitory style rooms for up to six students. All buildings are secure with codes allowing students access.

### Bed linen, towels and laundry

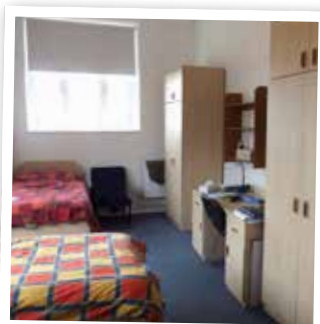
Bedding is provided and changed once a week. All residences and bathrooms are cleaned regularly. There is a laundry service or facilities at each LAL school. Students need to bring their own towels except at St Mary's where a towel is provided and changed once a week.

### Deposit and Damages Charges

All students must provide a refundable damage/loss deposit of GBP 60 in cash upon arrival.

### Note

Levels of accommodation may vary within each site.



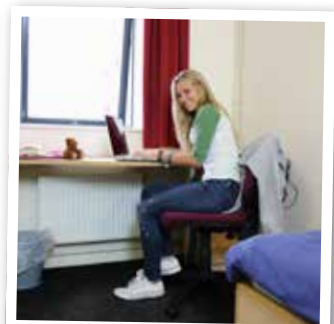
Berkhamsted School



St Mary's University



St Swithun's School



University of Sussex